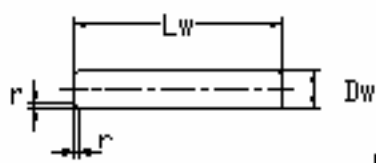
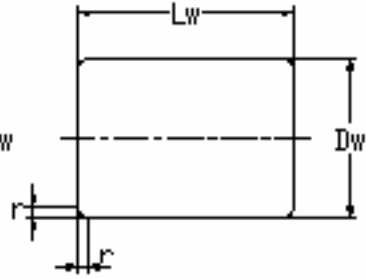


■ 滚针(Y)



■ 滚针(P)



■ 滚针(Z)

滚 动 体

Rolling Element

滚动体规格 Rolling Element Specification (mm)	外形尺寸 Boundary Dimensions (mm)		重量Weight 每1000件Per 1000pcs (Kg)
	Dw	Lw	
滚针 Needle Roller			
1.35X3.6	1.35	3.6	0.039
1.49X6.8	1.49	6.8	0.092
1.5X5.8	1.5	5.8	0.08
1.5X6.8	1.5	6.8	0.094
1.5X7.8	1.5	7.8	0.108
1.5X9.8	1.5	9.8	0.136
1.5X11.8	1.5	11.8	0.164
1.5X13.8	1.5	13.8	0.191
1.5X19.8	1.5	19.8	0.267
1.5X21.8	1.5	21.8	0.295
1.505X4	1.505	4	0.053
1.532X3.8	1.532	3.8	0.054
1.5875X9.65	1.5875	9.65	0.13
1.6X9.8	1.6	9.8	0.149
1.6X11.8	1.6	11.8	0.18
1.6X17.8	1.6	17.8	0.273
1.811X13.46	1.811	13.46	0.253
1.8313X12.14	1.8313	12.14	0.246
1.984X15.3	1.984	15.3	0.366
1.984X20.15	1.984	20.15	0.476
1.994X16.25	1.994	16.25	0.392
2X4	2	4	0.095
2X6.8	2	6.8	0.16
2X7.8	2	7.8	0.19
2X8.8	2	8.8	0.206
2X9.8	2	9.8	0.24
2X10.8	2	10.8	0.259
2X11	2	11	0.268
2X11.8	2	11.8	0.29
2X12.3	2	12.3	0.298
2X12.8	2	12.8	0.28
2X13.6	2	13.6	0.33
2X13.8	2	13.8	0.34
2X15.8	2	15.8	0.39
2X17.8	2	17.8	0.44

滚动体规格 Rolling Element Specification (mm)	外形尺寸 Boundary Dimensions (mm)		重量Weight 每1000件Per 1000pcs (Kg)
	Dw	Lw	
2X19.8	2	19.8	0.49
2X21.8	2	21.8	0.54
2.1X6	2.1	6	0.16
2.249X6.3	2.249	6.3	0.187
2.413X16.63	2.413	16.63	0.587
2.5X7.8	2.5	7.8	0.3
2.5X9.8	2.5	9.8	0.38
2.5X11.8	2.5	11.8	0.45
2.5X13.8	2.5	13.8	0.53
2.5X14.8	2.5	14.8	0.563
2.5X15.8	2.5	15.8	0.61
2.5X16.7	2.5	16.7	0.639
2.5X17.3	2.5	17.3	0.658
2.5X17.8	2.5	17.8	0.69
2.5X19.2	2.5	19.2	0.735
2.5X19.8	2.5	19.8	0.76
2.5X21.8	2.5	21.8	0.84
2.5X22.3	2.5	22.3	0.85
2.5X23.8	2.5	23.8	0.92
2.5X26.8	2.5	26.8	1.02
2.5X28.8	2.5	28.8	1.089
2.5X29.8	2.5	29.8	1.1
2.51X10	2.51	10	0.37
2.51X11	2.51	11	0.41
2.52X10	2.52	10	0.371
2.52X11	2.52	11	0.431
2.53X10	2.53	10	0.375
2.54X10	2.54	10	0.376
2.54X11	2.54	11	0.42
2.55X10	2.55	10	0.38
2.55X11	2.55	11	0.428
2.55X14.6	2.55	14.6	0.583
2.56X10	2.56	10	0.383
2.565X10	2.565	10	0.403
2.57X10	2.57	10	0.396
2.58X10	2.58	10	0.41
2.58X11	2.58	11	0.438
2.60X10	2.6	10	0.398
2.6X11	2.6	11	0.458
2.62X10	2.62	10	0.416
2.63X10	2.63	10	0.407
2.65X10	2.65	10	0.412
2.67X10	2.67	10	0.432
2.7X10	2.7	10	0.436
3X5.75	3	5.75	0.31
3X6	3	6	0.32
3X7.8	3	7.8	0.393
3X8	3	8	0.427
3X9.5	3	9.5	0.523
3X9.8	3	9.8	0.54
3X10	3	10	0.538
3X11.8	3	11.8	0.65

滚动体规格 Rolling Element Specification (mm)	外形尺寸 Boundary Dimensions (mm)		重量Weight 每1000件Per 1000pcs (Kg)
	Dw	Lw	
3X12.8	3	12.8	0.6931
3X13.8	3	13.8	0.76
3X14	3	14	0.74
3X14.8	3	14.8	0.82
3X15.8	3	15.8	0.87
3X17.8	3	17.8	0.99
3X19.8	3	19.8	1.1
3X21.8	3	21.8	1.21
3X23.8	3	23.8	1.32
3X24.8	3	24.8	1.361
3X25.8	3	25.8	1.43
3X27.8	3	27.8	1.54
3X29.8	3	29.8	1.61
3X31.8	3	31.8	1.723
3X39.8	3	39.8	2.164
3.01X10	3.01	10	0.532
3.01X11.8	3.01	11.8	0.623
3.02X10	3.02	10	0.52
3.02X11.8	3.02	11.8	0.627
3.03X10	3.03	10	0.539
3.03X11.8	3.03	11.8	0.631
3.05X8	3.05	8	0.441
3.05X11.8	3.05	11.8	0.657
3.1X11.8	3.1	11.8	0.62
3.16X6.7	3.16	6.7	0.403
3.175X23.11	3.175	23.11	1.413
3.2X5.9	3.2	5.9	0.376
3.2X6	3.2	6	0.376
3.2X6.4	3.2	6.4	0.389
3.5X11.8	3.5	11.8	0.91
3.5X13.8	3.5	13.8	1.05
3.5X15.8	3.5	15.8	1.19
3.5X17.8	3.5	17.8	1.35
3.5X19.8	3.5	19.8	1.51
3.5X21.8	3.5	21.8	1.67
3.5X23.8	3.5	23.8	1.85
3.5X25.8	3.5	25.8	1.96
3.5X27.8	3.5	27.8	2.1
3.5X29.8	3.5	29.8	2.25
3.5X31.8	3.5	31.8	2.373
3.5X34.8	3.5	34.8	2.65
3.55X6.5	3.55	6.5	0.501
3.55X6.6	3.55	6.6	0.509
3.55X12.8	3.55	12.8	0.968
3.60X12.8	3.6	12.8	1
3.65X12.8	3.65	12.8	1.021
3.967X19.05	3.967	19.05	1.802
4X10	4	10	0.97
4X12	4	12	1.164
4X13.8	4	13.8	1.28
4X15.8	4	15.8	1.55
4X17.8	4	17.8	1.75
4X19.8	4	19.8	1.95

滚动体规格 Rolling Element Specification (mm)	外形尺寸 Boundary Dimensions (mm)		重量Weight 每1000件Per 1000pcs (Kg)
	Dw	Lw	
4X21.8	4	21.8	2.14
4X23.8	4	23.8	2.33
4X25.8	4	25.8	2.53
4X27.8	4	27.8	2.62
4X29.8	4	29.8	2.95
4X33.8	4	33.8	3.25
4X34.8	4	34.8	3.4
4X37.8	4	37.8	3.64
4X38.8	4	38.8	3.74
4X39.8	4	39.8	3.9
4.018X18.8	4.018	18.8	1.842
4.02X15.8	4.02	15.8	1.478
4.05X15.8	4.05	15.8	1.48
4.10X15.8	4.1	15.8	1.482
4.5X13.8	4.5	13.8	1.683
4.505X8	4.505	8	0.994
4.902X25.019	4.902	25.019	3.68
5X14.8	5	14.8	2.115
5X17.8	5	17.8	2.587
5X18.8	5	18.8	2.798
5X19.8	5	19.8	3.03
5X20.5	5	20.5	3.1
5X21.8	5	21.8	3.36
5X23.8	5	23.8	3.58
5X24.8	5	24.8	3.82
5X25.8	5	25.8	3.98
5X27.8	5	27.8	4.18
5X29.8	5	29.8	4.6
5X34.8	5	34.8	5.4
5X38	5	38	5.857
5X39.8	5	39.8	6.15
5X44.8	5	44.8	6.74
5X49.8	5	49.8	7.5
5X59.8	5	59.8	9.131
5.296X9.652	5.296	9.652	1.633
5.5X17	5.5	17	3.078
5.66X19.8	5.66	19.8	3.681
5.66X29.8	5.66	29.8	5.7
5.951X24.13	5.951	24.13	5.195
6X13	6	13	2.6
6X18	6	18	3.9
6X19.8	6	19.8	4.12
6.0X21.8	6	21.8	4.57
6X23.8	6	23.8	5.243
6X24.8	6	24.8	5.381
6X29.8	6	29.8	6.36
6X34.8	6	34.8	7.594
6X35.8	6	35.8	7.816
6X39.8	6	39.8	8.703
6X43.8	6	43.8	9.591
6X44.8	6	44.8	9.813
6X49.8	6	49.8	10.923

滚动体规格 Rolling Element Specification (mm)	外形尺寸 Boundary Dimensions (mm)		重量Weight 每1000件Per 1000pcs (Kg)
	Dw	Lw	
6X59.8	6	59.8	13.03
6.35X20.624	6.35	20.624	5.06
6.35X30.8	6.35	30.8	7.56
7X14	7	14	4.2
7X21	7	21	6.317
7X27	7	27	8.096
7X38	7	38	11.5
7X41	7	41	12.128
7.071X29.8	7.071	29.8	9.197
7.62X25.4	7.62	25.4	9.015
7.85X15.87	7.85	15.87	5.958
7.94X11.1	7.94	11.1	4.168
7.94X18.03	7.94	18.03	6.879
7.94X19.05	7.94	19.05	7.324
7.94X22.86	7.94	22.86	8.74
7.991X10.566	7.991	10.566	4.08
8X13.79	8	13.79	5.36
8X30	8	30	11.766
8X40	8	40	15.53
8X60	8	60	23.37
8X70	8	70	27.27
8X80	8	80	31.18
8.05X15.82	8.05	15.82	6.23
9.715X11.38	9.715	11.38	6.544
10X30	10	30	18.19
10X40	10	40	24.27
10X50	10	50	30.37
10X60	10	60	36.45
10X70	10	70	42.58
10X80	10	80	48.67
10X90	10	90	54.76
10X100	10	100	60.85
12X60	12	60	52.981
12X80	12	80	70.728
圆柱滚子 Cylindrical Roller			
3X4.9	3	4.9	0.266
3X5	3	5	0.268
3.5X6.8	3.5	6.8	0.513
4X6	4	6	0.581
4X8	4	8	0.775
4X10	4	10	0.969
5X5	5	5	0.7551
5X5.9	5	5.9	0.892
5X7.9	5	7.9	1.197
5X8	5	8	1.212
5X10	5	10	1.515
5.5X8	5.5	8	1.468
6X6	6	6	1.308
6X8	6	8	1.714
6X12	6	12	2.637
6.1X8	6.1	8	1.801
6.358X4	6.358	4	0.963

滚动体规格 Rolling Element Specification (mm)	外形尺寸 Boundary Dimensions (mm)		重量Weight 每1000件Per 1000pcs (Kg)
	Dw	Lw	
7X7	7	7	2.0757
7X10	7	10	2.972
7.071X30	7.071	30	9.197
7.5X12.9	7.5	12.9	4.4
7.5X17.7	7.5	17.7	6
7.94X10.79	7.94	10.79	4.173
8X7.8	8	7.8	3.1
8X8	8	8	3.1038
8X10	8	10	3.8842
8X12	8	12	4.689
8X16	8	16	6.227
9X9	9	9	4.416
9X14	9	14	6.886
9X23.95	9	23.95	11.95
9.9X20	9.9	20	12
10X10	10	10	6.071
10X12	10	12	7.168
10X14	10	14	8.505
10X20	10	20	12.164
10X24	10	24	14.702
11X11	11	11	8.0778
11X15	11	15	11.0298
11.196X17.018	11.196	17.018	13.105
12X11.8	12	11.8	10.365
12X12	12	12	10.495
12X18	12	18	15.7653
12.928X20.95	12.928	20.95	21.538
12.975X15	12.975	15	15.533
13X12.8	13	12.8	13.131
13X26	13	26	26.739
13.63X24.33	13.63	24.33	27.81
14X14	14	14	16.6681
14X20	14	20	23.8423
15X15	15	15	20.512
16X16	16	16	25.039
17X17	17	17	29.8939
18X17.8	18	17.8	35.065
18X18	18	18	35.4589
18X26	18	26	51.6
19X19	19	19	41.7102
20X20	20	20	48.6636
20X30	20	30	72.9953
21X30	21	30	81.062
22X22	22	22	64.7693
24X36	24	36	127.237
25X25	25	25	95.1003
25X36	25	36	136.9446
26X26	26	26	106.997
28X28	28	28	134.325
30X30	30	30	164.355
30X48	30	48	262.9665

滚动体规格 Rolling Element Specification (mm)	外形尺寸 Boundary Dimensions (mm)		重量Weight 每1000件Per 1000pcs (Kg)
	Dw	Lw	
销 Pin			
销1.78X9.4	1.78	9.4	0.18
销1.8X6	1.8	6	0.117
冲1.8X25	1.8	25	0.493
销2.0X7.8	2	7.8	0.191
销2.5X6.8	2.5	6.8	0.295
销2.5X11.8	2.5	11.8	0.443
销2.97X13.8	2.97	13.8	0.748
销2.99X13.8	2.99	13.8	0.751
销3X5.2	3	5.2	0.302
销3X6	3	6	0.312
销3X14	3	14	0.731
销3X18	3	18	0.967
销3X20	3	20	1.054
销3X42	3	42	2.31
销3.01X12.8	3.01	12.8	0.708
销3.5X9	3.5	9	0.659
销3.505X21.8	3.505	21.8	1.639
销3.97X6.35	3.97	6.35	0.607
销4X4	4	4	0.385
销4X8.8	4	8.8	0.852
销4X10	4	10	0.973
销4X11.2	4	11.2	1.081
销4X13.8	4	13.8	1.331
销4X15.8	4	15.8	1.524
销4X18.7	4	18.7	1.838
轴 4X21.5	4	21.5	2.08
销4X21.8	4	21.8	2.136
销4.02X6.5	4.02	6.5	0.638
销5X5	5	5	0.755
销5X5.6	5	5.6	0.851
销5X5.99	5	5.99	0.91
销5X8	5	8	1.217
销5X12.8	5	12.8	1.931
销5X17	5	17	2.574
销5X18	5	18	2.711
销5X20.6	5	20.6	3.109
销5X38	5	38	5.903
轴5.2X18.6	5.2	18.6	3.07
轴5.2X25	5.2	25	4.14
销5.5X5.99	5.5	5.99	1.1
销5.57X11	5.57	11	2.091
销6X10	6	10	2.186
销6X11.5	6	11.5	2.58
轴 6X19.5	6	19.5	4.21
销6X21	6	21	4.628
销6X25.8	6	25.8	5.662
销6X29	6	29	6.39
轴6X45.5	6	45.5	10.064
销6X53	6	53	11.744
滚轮轴7X17.5	7	17.5	5.16
销7X48.5	7	48.5	14.652

滚动体规格 Rolling Element Specification (mm)	外形尺寸 Boundary Dimensions (mm)		重量Weight 每1000件Per 1000pcs (Kg)
	Dw	Lw	
销7X50	7	50	15.09
销8X14	8	14	2.403
销8X30	8	30	11.764
销8X35	8	35	13.724
销8X38.7	8	38.7	15.25
销8X40	8	40	15.698
销8X42.5	8	42.5	16.75
销8X45	8	45	17.668
销8X50	8	50	19.64
销8X55	8	55	21.598
销8X60	8	60	23.572
销8X65	8	65	25.542
销8X70	8	70	27.516
销8X80	8	80	31.46
销8X100	8	100	39.33
销9X90	9	90	44.602
销10X40	10	40	24.529
销10X50	10	50	30.691
销10X60	10	60	36.482
销10X70	10	70	42.994
销10X80	10	80	49.156
销10X116	10	116	71.521
销11.25X19.4	11.25	19.4	11.1
销12X14	12	14	3.803
轴12X63.5	12	63.5	55.99
销13X38	13	38	20.46
销13X38.2	13	38.2	20.58
销13X39	13	39	21.022
轴13X72	13	72	49.697
销14X39	14	39	20.401
销14X41	14	41	24.3
销14X41.5	14	41.5	24.5
销14X43	14	43	25.502
销14X47.5	14	47.5	28.111
销15X40	15	40	30.631
销15X40.5	15	40.5	
销15X42	15	42	23
销15X49.9	15	49.9	45.423
销16X46.5	16	46.5	38.702
销16X51	16	51	42.213
销16X64	16	64	100.3
销19X50	19	50	111.275
销28X53	28	53	252.311